



Stockwell Road, Brixton, SW9

2 bedroom flat - purpose built for sale

£650,000

Leasehold

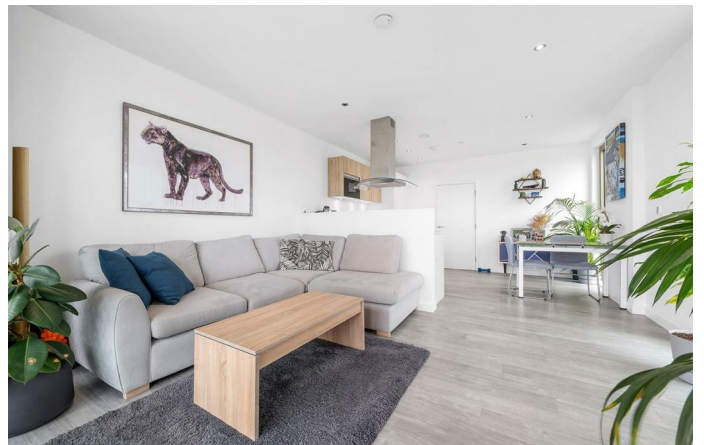
Property Details

A fantastic two double bedroom, two bathroom apartment with a private South-facing terrace and an allocated underground parking space. Set on the thirteenth floor of this sought-after luxury development within the desirable Brixton-Stockwell-Clapham Triangle, the apartment enjoys abundant sunlight, triple-aspect views, and a wonderful sense of privacy. The spacious open-plan reception forms the heart of the home, where full-height windows frame far reaching views. The adjoining South-facing terrace offers a serene outdoor retreat—perfect for morning coffee or evening aperitifs. The sleek modern kitchen features integrated appliances, including a microwave, dishwasher, and wine cooler, while a separate utility cupboard in the hall keeps the laundry tucked away. Both bedrooms are generous doubles with built-in wardrobes and floor-to-ceiling windows; one benefits from a stylish en-suite shower room, while the main bathroom offers a double ended bath with rainfall shower. Underfloor heating runs throughout. Residents enjoy secure entry, lifts, cycle storage, a private residents' terrace, 24-hour CCTV, and onsite estate security, all within easy reach of vibrant amenities and excellent transport links.

Council tax band D EPC rating B (86)

Features

- Two double bedrooms
- Two bathrooms
- South-facing private terrace
- Thirteenth floor, triple aspect views
- Secure contemporary building
- Underground allocated parking
- Bike storage, additional resident's terrace and lift access
- Sought-after location between Brixton, Stockwell and Clapham
- Central Brixton just a five-minute stroll away
- Victoria and Northern Lines

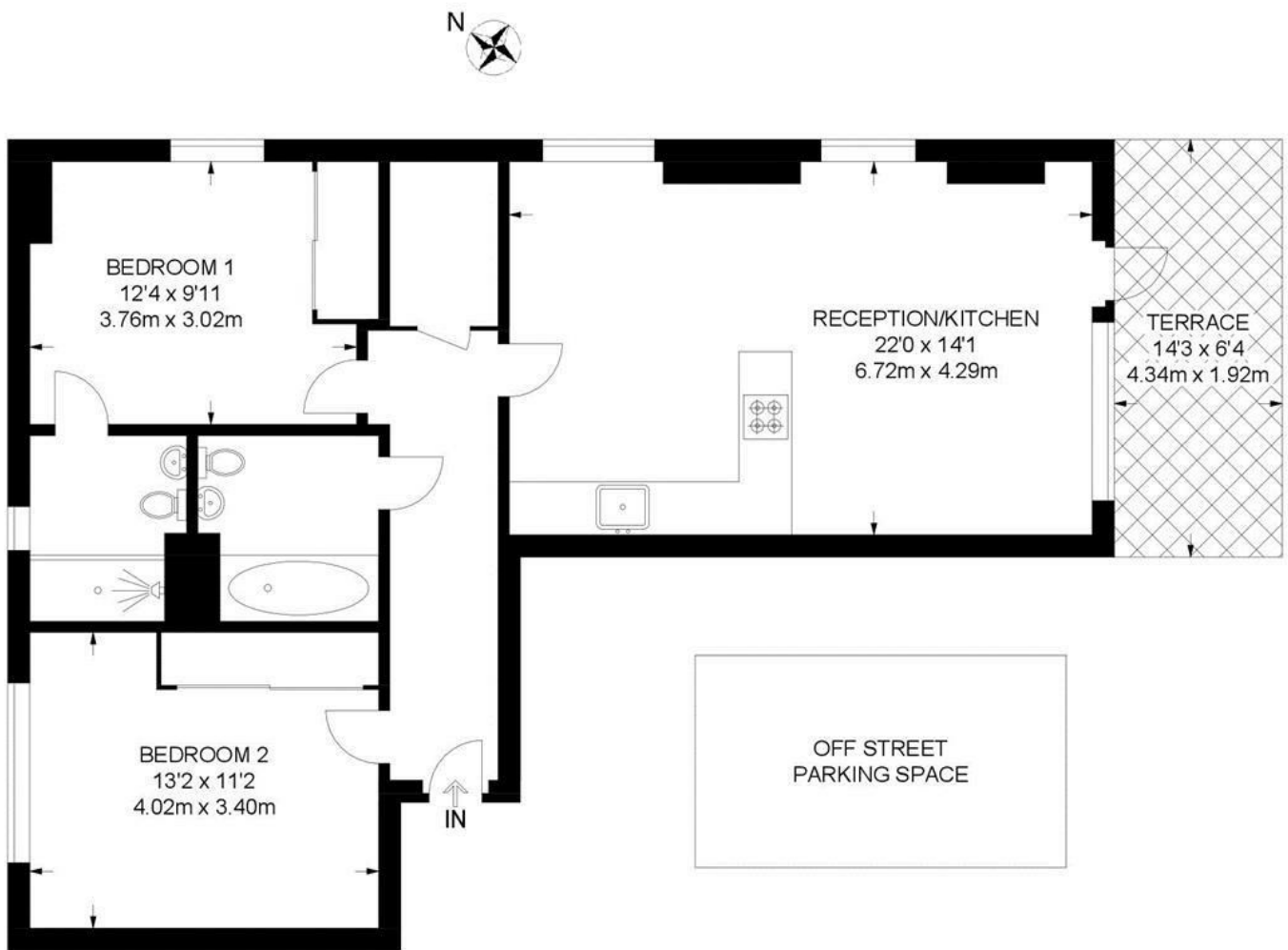




Stockwell Road, Brixton, SW9

Stockwell Road, SW9
2 Bedroom Flat

APPROXIMATE GROSS INTERNAL AREA: **795 SQ FT / 73.8 SQ M**



THIRTEENTH FLOOR



While we try our very best, floor plans are produced as a guide only and we take no responsibility for the precise accuracy with which any property is represented.

Stockwell Road, Brixton, SW9

